



Apt 43 The Frame, 2a The Waterfront, Sportcity, Manchester, M11 4BX

CASH BUYERS ONLY.

Welcome to this charming two-bedroom apartment located in the heart of Sportcity at The Frame, 2a The Waterfront. Situated on the fifth floor, this property boasts a spacious reception room with balcony over looking nearby canal, perfect for entertaining guests or simply relaxing after a long day.

With two bedrooms, there is plenty of space for a small family, a couple, or even as a stylish home office. The apartment features a modern bathroom, ideal for unwinding in a warm bath after a busy day in Central Manchester, which is conveniently close by.

One of the perks of this property is the parking space available for one car, ensuring you never have to worry about finding a spot after a long day at work. Additionally, this apartment comes with no onward chain, making the buying process smooth and hassle-free.

EWS1 in Place.

Price £145,000

Viewing arrangements

Viewing strictly by appointment through the agent
245 Deansgate, Manchester, M3 4EN 0161 833 9499 opt 3

Entrance Hall

Laminate flooring. Ceiling light. Wall mounted heater.
Intercom.

Living Room/Kitchen

23'3" x 12'9"
Range of wall and base units with worktops over. Sink with mixer tap. Integrated fridge/freezer. Cooker with hob and extractor over. Laminate flooring. Ceiling light. Wall mounted heater. Access to balcony.

Bedroom One

12'6" x 9'3"
Laminate flooring. Ceiling light. Wall mounted heater. Fitted wardrobes. TV and telephone point.

Bedroom Two

9'5" x 8'5"
Laminate flooring. Ceiling light. Wall mounted heater.

Bathroom

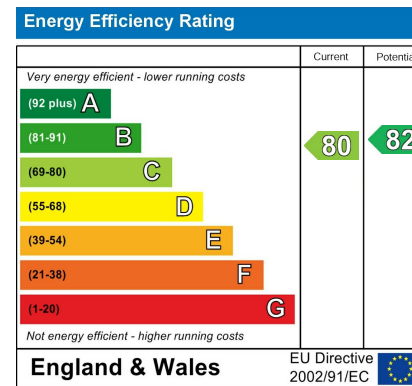
Low level W/C. Sink with mixer tap. Bath with mixer shower over. Heated towel rail. Ceiling light.

Externally

Allocated parking space. Lifts to all floors. Balcony.

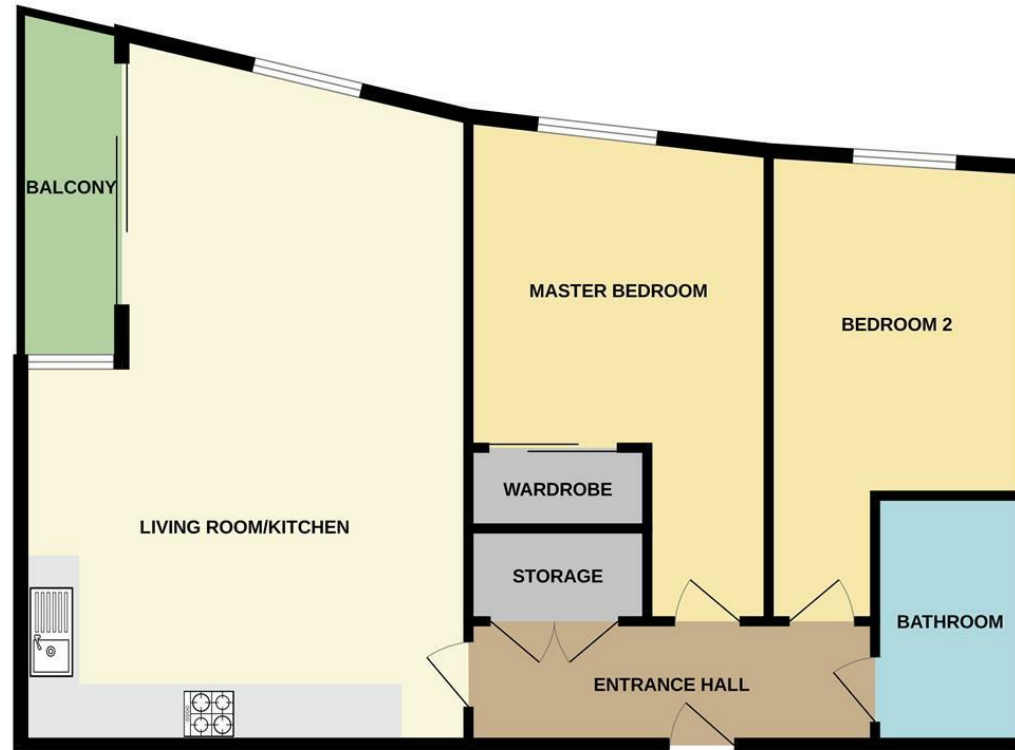
Additional Information

Lease Term: 250 years (less 10 days) from 9 January 2003.
Service charges are approximately £2580.00 per annum
Ground rent £50.00 per annum
Council Tax Band: B





5TH FLOOR



Measurements are approximate. Not to scale. Illustrative purposes only.
Made with Metropix ©2024



These particulars are believed to be accurate but they are not guaranteed and do not form a contract. Neither Jordan Fishwick nor the vendor or lessor accept any responsibility in respect of these particulars, which are not intended to be statements or representations of fact and any intending purchaser or lessee must satisfy himself by inspection or otherwise as to the correctness of each of the statements contained in these particulars. Any floorplans on this brochure are for illustrative purposes only and are not necessarily to scale.

Offices at: Chorlton, Didsbury, Disley, Hale, Glossop, Macclesfield, Manchester Deansgate, Manchester Whitworth Street, New Mills, Sale, Wilmslow and Withington

245 Deansgate, Manchester, M3 4EN

0161 833 9499 opt 3

manchester@jordanfishwick.co.uk

www.jordanfishwick.co.uk

